

Special Status Animals and Plants Addressed By the HMP

Ranger District 4

Wildlife

- Bald eagle nest
- California spotted owl activity center
- ▲ Greater sandhill crane
- Northern goshawk activity center
- Willow flycatcher
- ▲ Mule deer
- ▬ Lahontan cutthroat trout stream
- California red-legged frog (CRLF)
- ▨ CRLF designated critical habitat
- ▲ Foothill yellow-legged frog
- ⊕ Sierra Nevada yellow-legged frog (SNYLF)
- ▨ SNYLF designated critical habitat
- Sierran treefrog
- Western pond turtle

Plants

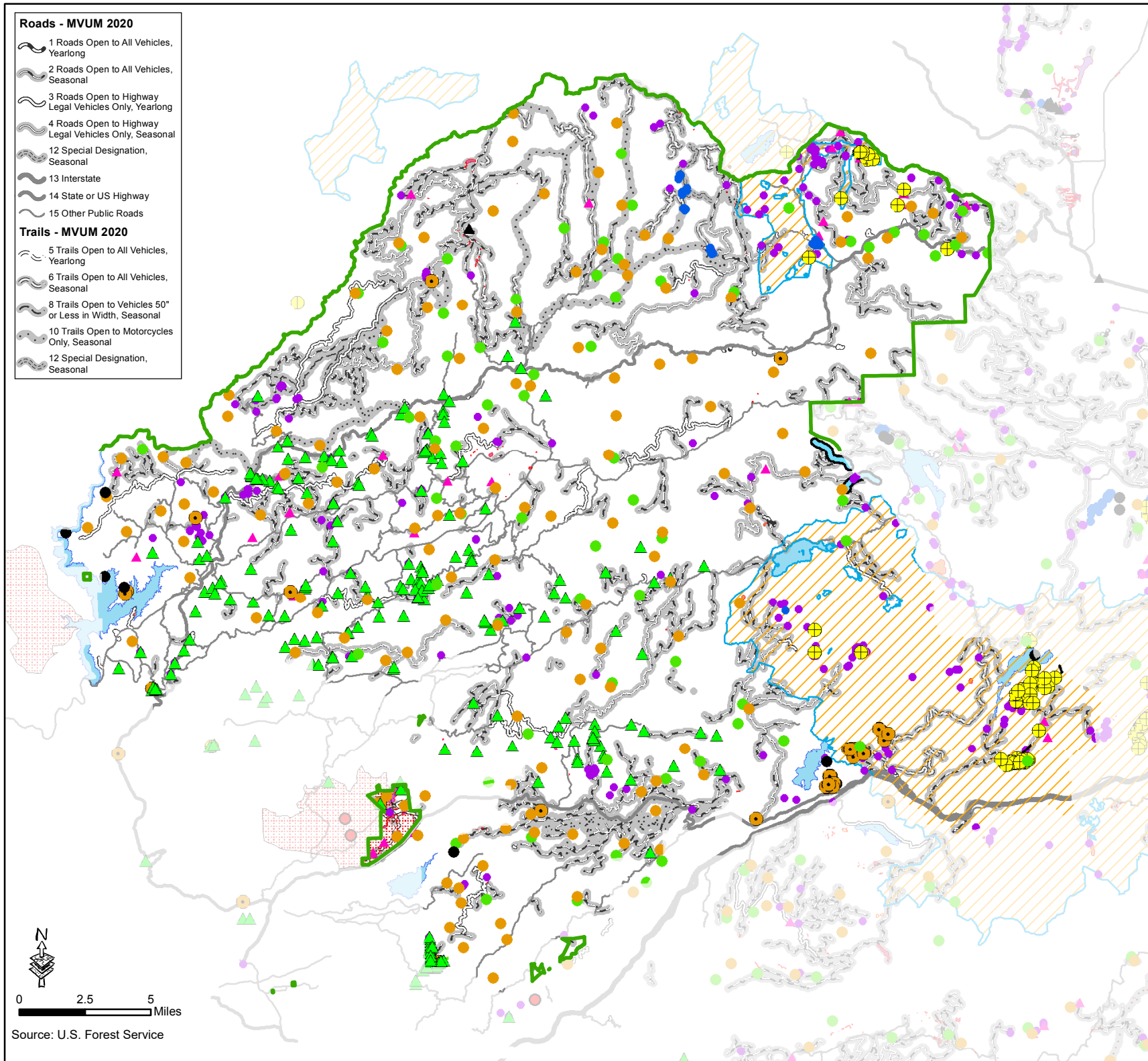
- *Arctostaphylos nisseniana*
- *Botrychium ascendens*
- *Botrychium crenulatum*
- *Botrychium lunaria*
- *Botrychium minganense*
- *Bruchia bolanderi*
- *Cypripedium fasciculatum*
- *Erigeron miser*
- *Fritillaria eastwoodiae*
- *Ivesia aperta* var. *aperta*
- *Ivesia sericoleuca*
- *Lewisia kelloggii* ssp. *hutchisonii*
- *Lewisia kelloggii* ssp. *kelloggii*
- *Meesia uliginosa*
- *Packeria layneae*
- *Peltigera gowardii*
- *Phacelia stebbinsii*
- *Poa sierrae*
- *Pyrocoma lucida*

Roads - MVUM 2020

- 1 Roads Open to All Vehicles, Yearlong
- 2 Roads Open to All Vehicles, Seasonal
- 3 Roads Open to Highway Legal Vehicles Only, Yearlong
- 4 Roads Open to Highway Legal Vehicles Only, Seasonal
- 12 Special Designation, Seasonal
- 13 Interstate
- 14 State or US Highway
- 15 Other Public Roads

Trails - MVUM 2020

- 5 Trails Open to All Vehicles, Yearlong
- 6 Trails Open to All Vehicles, Seasonal
- 8 Trails Open to Vehicles 50" or Less in Width, Seasonal
- 10 Trails Open to Motorcycles Only, Seasonal
- 12 Special Designation, Seasonal



Source: U.S. Forest Service